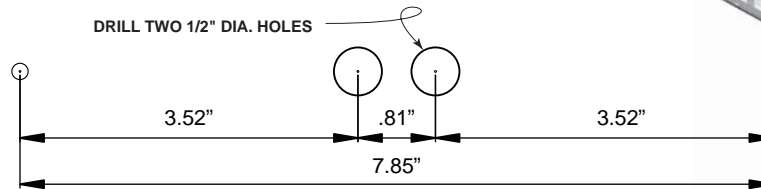
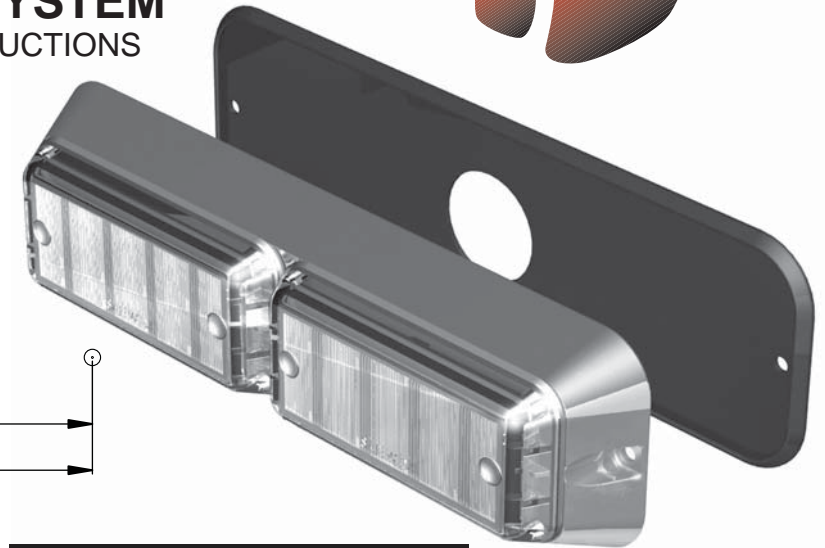


# PREDATOR™

## SIDE BY SIDE SURFACE MOUNT WARNING SYSTEM ASSEMBLY INSTRUCTIONS EPRDSSDBx



**WARNING:** Warning devices are strictly regulated and governed by Federal, State and Municipal ordinances. These devices shall be used ONLY on approved vehicles. It is the sole responsibility of the user of these devices to ensure compliance.

### MOUNTING INSTRUCTIONS

**Important: DO NOT over tighten mounting screws or nuts. This could cause permanent damage to the bracket. Use appropriate hardware for mounting.**

1. Locate flat mounting location for Predator Surface Mount LEDs. If surface is perfectly flat, foam gasket may not be required.
2. Using the hard gasket as a template, mark and drill pilot holes for mounting screws.

**Note: The mounting holes will be slightly greater than 4-1/8" center to center (long dimension) and slightly greater than 1-3/8" (short dimension). These dimensions are for approximate reference only.**

3. Drill two (2) 1/2" holes on the center line of the mounting hole pattern (see layout - do not scale).  
**Note: If possible, the back side of this hole should be deburred where drill breakthrough occurs.**
4. Route cable through hole in hard gasket and center of foam gasket. Then make electrical connections (Red-power, Black-ground. White is for pattern selection and will be taped after selection is made). If the final location of the cable will be inaccessible, pattern selection must be made before final installation.
5. Install gasket over rear of light and loosely install unit with #8 self-threading screws (stainless steel is recommended). Note: Gasket must be used to prevent oxidation and galvanization of the mounting surface if differing metals come in contact.
6. When final position of unit is obtained tighten screws. **DO NOT OVERTIGHTEN!**

**IMPORTANT: DO NOT** connect this device to a strobe power supply.

### OPERATING INSTRUCTIONS

The Dual Predator comes equipped with 2 independently controlled internal flashers, each with 33 user selectable patterns. Or each internal flasher can be put into slave mode and driven through an external flasher.

1. Connect both Predator BLACK wires to a good, convenient ground.
2. Connect both Predator RED wires to one side of a user supplied on/off switch. Connect the other side of the switch, through a 5Amp fuse, to a source of +10-30Vdc.

### PATTERN SELECTION

1. Turn Predator ON.
2. Touching and removing the WHITE wires to ground will advance each Predator to the next flash pattern. See flash pattern table. Continuing to touch and remove the WHITE wires to ground will allow you to scroll through the pattern list. After pattern #33 is reached the list will start over again at pattern #1.

**NOTE:** The Predator is equipped with flash pattern memory. Once you have selected a pattern the Predator will always activate to that pattern every time the unit is turned on. Tape up and secure both WHITE wires so that your selected pattern will not accidentally be changed.

## WARNING

This product contains high intensity LED devices. To prevent eye damage, **DO NOT** stare into light beam at close range.

### PATTERN RESET

1. Remove power.
2. Place WHITE (sync) wire to ground.
3. With sync wire grounded, re-power RED wire.
4. Maintain for one second (light will dim).
5. Remove power and ground (pattern 1 set).

### SLAVE MODE

The Predator is capable of being activated through the use of a user supplied flasher by putting it in slave mode.

1. Permanently connect both Predator WHITE and BLACK wires to a good, convenient ground.
2. Connect both Predator RED wires, through a 5Amp fuse, to the output of a +10-30Vdc switching flasher.

**NOTE:** The Predator is a factory sealed unit that **CANNOT** be serviced in the field. Any attempt to gain access to the Predator unit will cause permanent damage and void its warranty.

CURRENT DRAW AT 12.8Vdc	
Red/Amber	1.0A
Blue/White	1.5A

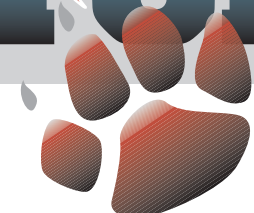
WIRE HOOK-UP TABLE	
Wire Color	Connect to:
Red	+10-30Vdc
Black	Ground (-)
White	Pattern Select



3900 Central Parkway  
Hudsonville, MI 49426  
toll free 800.338.7337  
office 616.896.7100

techsupport@soundoffsignal.com  
www.soundoffsignal.com

# PREDATOR™



## SIDE BY SIDE SURFACE MOUNT WARNING SYSTEM FLASH PATTERNS AND ID# SETTINGS EPRDSSDBx

### Predator Sync Configuration Instructions

1. Set ID#
  - a. Identify which pattern and sequence you want and look up ID#s on table.
  - b. Connections
    - i. RED: +12Vdc
    - ii. WHT: +12Vdc (Note: you will need to disconnect after power is applied)
    - iii. BLK: Ground
  - c. Apply power to unit
  - d. Without disconnecting power from unit, disconnect WHT wire
  - e. Momentarily connect WHT to Ground to change ID #
    - i. Identify ID# by number of sequential flashes
    - ii. Possible ID#s: 1 – 4
  - f. Disconnect power from unit to get out of ID mode.
2. Set Pattern
  - a. Reapply power to units.
  - b. Once all Light Head ID#s are configured, make sure all lights are flashing the same pattern
  - c. Connect corresponding colored wires of all units together: RED to RED, etc.
  - d. Change Pattern
    - i. Momentarily connect WHT wires to Ground
    - ii. Observe pattern change on all lights connected
  - e. Insulate all wires by taping with electrical tape
3. Connect Master Switch for Application
  - a. **IMPORTANT!** Ensure WHT Pattern/Sync Wires are tied together

### 1 LIGHT

Single Light Operation: Follow the ID Selection steps and set the PREDATOR II to ID#1 if it is not already. NOTE: Steady Burn is produced for patterns 9 & 10 in Single Operation.

### 2 LIGHTS

**ALTERNATING:** To obtain Alternating patterns, follow the ID SELECTION steps and set one PREDATOR II to ID#1 and the other to ID#3. Then proceed to the PATTERN SELECTION steps.

**SIMULTANEOUS:** To obtain Simultaneous patterns, follow the ID SELECTION steps and set both PREDATOR II lights to ID#1. Then proceed to PATTERN SELECTION steps.

### 4 LIGHTS

**X-Pattern:** To obtain X-patterns, follow the ID SELECTION steps and set one of the four PREDATOR II lights to ID#1, one to ID#2, one to ID#3, and one to ID#4. Then proceed to PATTERN SELECTION steps. NOTE: Be sure to mount each PREDATOR II in the correct placement based on ID#.

### FLASH PATTERNS for SIDE-BY-SIDE SURFACE MOUNT PREDATOR

#	Pattern Name	1 Light	Alternating 2 Lights	Simultaneous 2 Lights	X-Pattern 4 Lights	Flashes/ Minute
1	Quint	X	X	X		70
2	Warp	X	X	X		350
3	Inter-Cycle Flash	X	X			
4	Double Flash	X	X	X		70
5	Quad Flash	X	X	X		80
6	Power Pulse	X	X	X		180
7	Road Runner	X	X	X		113
8	Q-Switch	X	X			
9	Road Runner Steady Burn	X	X			113
10	Quad Steady Burn	X	X			80
11	E-Ideal Single Flash	X	X	X		200
12	E-Ideal Double Flash	X	X	X		146
13	Quad2 Flash	X	X	X		67
14	Double2 Flash	X	X	X		95
15	X-Warp				X	
16	X-Double				X	
17	PowerRunner	X	X	X		
18	LCR Quint	X	X	X		
19	Warp <sup>1</sup>	X	X	X		
20	Ultra Warp	X	X	X		545
21	Thunder and Lightning	X	X			
22	LiteSpeed	X	X	X		85
23	SuperSonic	X		X		170
24	LCR LiteSpeed	X	X	X		
25	SuperSonic Ultra	X	X	X		
26	TempoShift	X	X	X		
27	TempoShift Warp	X	X	X		
28	SBE2	X	X	X		67
29	C <sup>2</sup>	X	X	X		200
30	U <sup>2</sup>	X	X	X		176
31	UltraGlow	X	X	X		
32	Cyclone	X	X	X		
33	Chameleon	X	X	X		

### X-Pattern Sequence

ID#1 > ID#4 > ID#2 > ID#3

### X-Pattern Light Head Placement

ID#4	ID#2
ID#3	ID#1