

Dome Lights LED & Incandescent

- **Officer safety is our primary concern** - we have designed an interior Dome Light with an optional Red LED Night Light to reduce officer targeting - officer can see clearly inside & outside the vehicle when the Red LED Night Light is turned on
- **Red LED Night Light reduces eye fatigue**
- **New Design has a slim, flush housing** (less than 1" overall height) with the On/Off switch moved to the outer lens
- **Original Design features Side Switching** with more LEDs (a brighter light) & a taller dome depth (overall height)
- **Universal model is a surface mount design**, no cutouts in the headliner required
- **Available for police package vehicles with plug-in connector** for quick & easy installation



Ford Crown Victoria Police Interceptor models have vehicle compatible bracket for easier installation.



Prevent eye fatigue and increase officer safety with our exclusive Red LED Night Light available on all models.



Original Design light features convenient side switching. LED or Incandescent models available.



Universal models are installed as a surface mount with pre-drilled holes for 2 or 4 screws.

Tech Specs	New Design	Original Design
Technology:	1 White Gen3 LED 8 Red Gen2 LEDs	21 White Gen2 LEDs 12 Red Gen2 LEDs Incandescent model available
Mounting:	Surface Mount (see Install Sheets on website for details)	
Input Voltage:	10 - 16 Vdc: most lights 10 - 30 Vdc: ECVDMLTALIMP, ECVDMLTALDC & ECVDMLTALCV	
Current Draw:	LED models: less than 0.2 amps	LED models: 112-180 mA Incandescent models: 740 mA
Dimensions:	Diameter x Depth 5.9" (15 cm) Diam. x 0.9" (23 mm) D	Diameter x Depth 6.2" (16 cm) Diam. x 1.5" (38 mm) D
Operating Temp.:	-40° to +65° C / -104° to +149° F	



(Incandescent)



(LED)



**Reduce officer targeting & eye fatigue
with Red LED Night Light Dome Lights**



Red LED Night Light

Chevrolet Impala w/ Red Night Light

New Design:

#ECVDMLTALIMP LED, White Dome, 10-30v

Original Design:

#ECVDMLTØLMP LED, White Dome, 10-16v

#ECVDMLTIMP Incandescent, White Dome, 10-16v

Dodge Charger w/ Red Night Light

New Design:

#ECVDMLTALDC LED, White Dome, 10-30v

#ECVDMLDC1 Incandescent, White Dome, 10-16v

Dodge Magnum w/ Red Night Light

New Design:

#ECVDMLDC1 Incandescent, White Dome, 10-16v

Ford Crown Victoria w/ Red Night Light

New Design:

#ECVDMLTALCV LED, White Dome, 10-30v

Original Design:

#ECVDMLTØLCV LED, White Dome, 10-16v

#ECVDMLTCV Incandescent, White Dome, 10-16v

Universal w/ Red Night Light

New Design:

#ECVDMLTALØØ LED, White Dome, 10-16v

Original Design:

#ECVDMLTØLMP LED, White Dome, 10-16v

#ECVDMLTØØ LED, White Dome, 10-16v

#ECVDMLT2ALØØ LED, Clear Dome, 10-16v

Parts & Accessories

Replacement Incandescent Bulb:

#PDMLTB1Ø

**New Design w/ Outer
Lens Switching**



New Design illuminated



**Original Design, White Dome
& Side Switching**



**Original Design, Clear Dome
& Side Switching**



Original Design illuminated

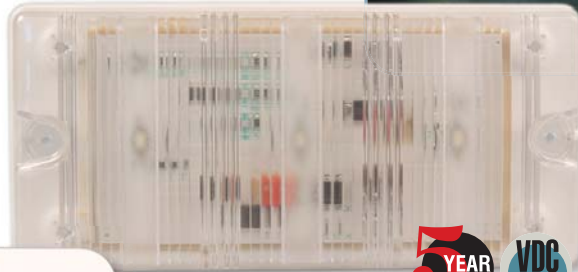


Interior DOME LIGHTS

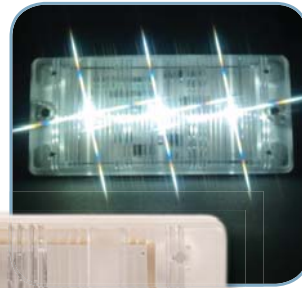
- 7" x 3.25" #ECVDMLTST2
- 6" x 3" #ECVDMLTST4
- 5" Oval #ECVMLDP2W



ECVDMLTST4



ECVDMLTST2



LED STRIP LIGHT

- 12 volt #ETULT12W
- 10-30 volt #ETULT12W-24



#ECVDMLTST2 - Universal Dome Light, Gen3 LED

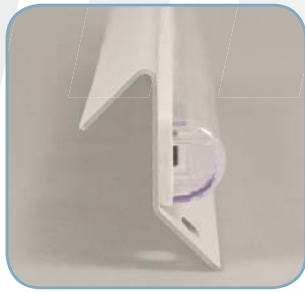
- Exclusive lens design disperses the maximum amount of light
- Easy on the electrical system - draws less than 0.65 amps
- Great for interior light for overhead lighting on passenger buses
- Durable polycarbonate lens & base is a simple surface mount
- Includes 2-wire lead w/ a 5" length & mounting screws for installation

#ECVDMLTST4 - Universal Dome Light, Gen2 LED

- Smaller size with a lower price is budget friendly
- Easy on the electrical system - draws less than 0.3 amps
- Easy surface mount with a simple 2-wire electrical connection required
- Great interior light for overhead lighting on passenger buses
- Includes 2-wire lead w/ a 5" length & mounting screws for installation

#ETULT12W & #ETULT12W-24 - LED Strip Lights

- Simple two wire electrical connection is easy to install
- Easy on the electrical system - draws just 0.4 amps
- Light has a white steel base with a scratch resistant polycarbonate lens
- Specially engineered Fresnel lens to boost light output and brightness
- Made with Gen3 LEDs for a long-lasting light with no bulbs to change
- Includes 2-wire lead w/ a 18" length



LED 90° CORNER MOUNT STRIP LIGHT, 10 - 16 VDC

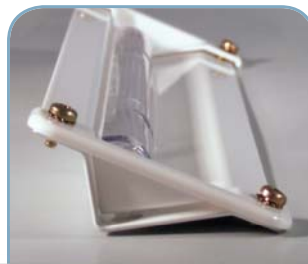
10" Length #ECVCSLLED10
 21" Length #ECVCSLLED21
 32" Length #ECVCSLLED32
 43" Length #ECVCSLLED43

LED 90° CORNER MOUNT STRIP LIGHT, 10-30 VDC

10" Length #ECVCSLLED10-30
 21" Length #ECVCSLLED21-30
 32" Length #ECVCSLLED32-30
 43" Length #ECVCSLLED43-30

LED FLUSH MOUNT STRIP LIGHT, 12 VOLT

12" Length #ECVCLLED12
 24" Length #ECVCLLED24
 36" Length #ECVCLLED36
 42" Length #ECVCLLED42



#ECVCSLLED(xx) - LED 90° Corner Mount Strip Light

- Streamlined, low amp draw LED lighting
- Easy on the electrical system - draws just 0.4 amps per 12" length
- Housing design allows for clean wire management behind the light
- Easy installation - make a simple 2-wire electrical connection
- Glossy white powder coated Aluminum housing with a polycarbonate lens
- 10- 30 volt models available
- Includes 2-wire lead w/ a 18" length

#ECVCLLED(xx) - LED Flush Mount Strip Light

- Recessed, flush mount brightly illuminates dark spaces
- Easy on the electrical system - draws just 0.4 amps per 12" length
- Specially engineered lens optic directs light away from viewer's eye while illuminating interior spaces
- Field serviceable - easy access to individual modules
- Glossy white powder coated Aluminum housing with a polycarbonate lens
- Includes 2-wire lead w/ a 18" length & end/trim caps