

# Predator 2™ Extreme Angle LED Surface Mounts

- **Wide, bright Extreme Angle output** - our brightest surface mount light
- **10 - 30 volt operation**
- **Heavy duty, weatherproof surface mount design**
- **Die cast aluminum housing finished with a Black, Chrome or White** powder coat finish
- **Durable Lexan polycarbonate lens** with UV inhibitor prevents discoloration
- **Optional Mounting Brackets** available for additional mounting options (see bottom of opposite page for photos & part numbers)
- **Single light in "split colors" available**
- **Stop/Tail Light available in Dual Stacked model** - features upper Warning Module in your choice of color with a Red LED Stop/Tail Module on the bottom
- **Light Sync Technology to synchronize your lights**
- **Includes** Santoprene Rubber Mounting Gasket & Mounting Hardware with 18" of 3-wire Shielded Cable



Single Predator 2™ Single Surface Mount light mounted on the side of a truck offers a superior side warning signal.



45° Horizontal or Vertical brackets & 90° Bracket optional for versatile mounting in any area on the vehicle.



Red LED Dual Stacked Predator 2 shown mounted on the rear of a fire truck.



Dual Stacked Predator 2 mounted on the head-ache rack bracket on a Ford F-250 truck.

Tech Specs	Predator 2™
Flash Patterns:	33 Flash Patterns
Light Sync:	Yes
Technology:	Single: 8 Gen3 LEDs Duals: 16 Gen3 LEDs
Mounting:	Surface Mount
Single	on 4.125" (10 mm) centers
Stacked	on 4.14" (10 mm) centers
Side-by-Side	on 7.85" (20 cm) centers
Input Voltage:	10 - 30 Vdc
Current Draw:	Single: 1.1 amps max. Dual: 2 amps max. (flash pattern dependent)
Dimensions:	Width x Height x Depth
Single	4.5" (11 cm) W x 2.4" (60 mm) H x 1.25" (32 mm) D
Stacked	4.5" 11 cm) W x 3.8" (97 mm) H x 1.25" (32 mm) D
Side-by-Side	8.2" (21 cm) W x 2.4" (XX mm) H x 1.25" (32 mm) D
Operating Temp.:	-40° to +65° C / -104° to +149° F

## COLORS Solid

(x) = **A B G R W**

## Dual/Split

(x) = **A B D E F**  
**G H J K L**  
**M N P R W**





SAE Class 1  
Class 1  
Certified



### Single SM, Solid Colors

Black Housing: #EP2SSMDB(x)  
White Housing: #EP2SSMDB(x)W  
Chrome Housing: #EP2SSMDB(x)C

### Single SM, Split Colors

Black Housing: #EP2SSMBS(x)  
White Housing: #EP2SSMWS(x)  
Chrome Housing: #EP2SSMCS(x)



SAE Class 1  
Class 1  
Certified

### Dual Stacked SM

Black Housing: #EP2DSMDB(x)  
White Housing: #EP2DSMDB(x)W  
Chrome Housing: #EP2DSMDB(x)C



### Dual Stacked SM, Stop/Tail

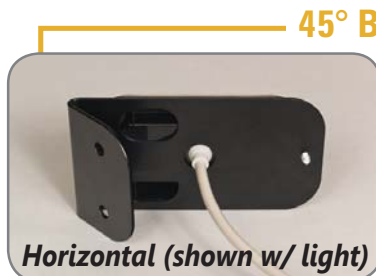
Black Housing: #EP2DSMSTT(x)  
White Housing: #EP2DSMSTT(x)W  
Chrome Housing: #EP2DSMSTT(x)C  
Upper Warning Module can be Blue, Red or Amber.  
Bottom Module is Red only with Stop/Tail function.



SAE Class 1  
Class 1  
Certified

### Dual Side-by-Side SM

Black Housing: #EP2DSSDB(x)  
White Housing: #EP2DSSDB(x)W  
Chrome Housing: #EP2DSSDB(x)C



Horizontal (shown w/ light)



Vertical (kit shown)



90° Bracket

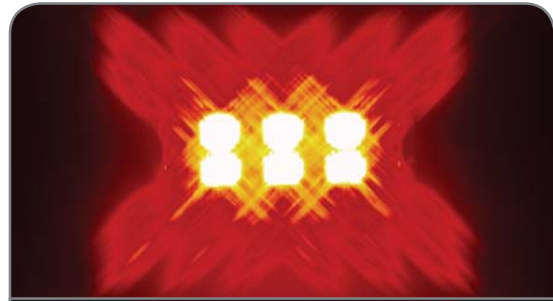
Vertical #PPRSM45BRKT (pair)  
Horizontal #PPRSM45HBRKT (pair)

#PPRSM90BRKT (pair)

Dash/Deck/Grilles also available, see pages 45 - 46  
Windshield Lights also available, see pages 49 - 50

# Predator™ LED Surface Mounts

- **Heavy duty, weatherproof surface mount (SM) design in single or dual options**
- **Die cast aluminum housing finished with a Black, Chrome or White powder coat finish**
- **10 - 16 volt operation**
- **Durable Lexan polycarbonate Lens with UV inhibitor** prevents discoloration or yellowing of the lens
- **Optional Mounting Brackets** available for additional mounting options (see bottom of opposite page for photos & part numbers)
- **Light Sync Technology to synchronize your lights** to alternate the flash patterns or flash simultaneously
- **Includes** Santoprene Rubber Mounting Gasket & Mounting Hardware with 18" of 3-wire Shielded Cable



Unique mount & special design angles & amplifies the output for heightened visibility wherever you need it.



Predator Dual Side-by-Side lights installed on a Canadian fire department van. ETL 5000 lightbar also shown.



Predator™ Single Surface Mounts installed on the grille of a Wildlife & Parks Chevrolet Silverado truck.

Tech Specs	Predator™
Flash Patterns:	33 Flash Patterns
Light Sync:	Yes
Technology:	Single: 6 Gen3 LEDs Duals: 12 Gen3 LEDs
Mounting:	Surface Mount
Single	on 4.125" (10 mm) centers
Stacked	on 4.14" (10 mm) centers
Side-by-Side	on 7.85" (20 cm) centers
Input Voltage:	10 - 16 Vdc
Current Draw:	Single: 1.1 amps max. Dual: 2 amps max. (flash pattern dependent)
Dimensions:	Width x Height x Depth
Single	4.5" (11 cm) W x 2.4" (60 mm) H x 1.25" (32 mm) D
Stacked	4.5" 11 cm) W x 3.8" (97 mm) H x 1.25" (32 mm) D
Side-by-Side	8.2" (21 cm) W x 2.4" (XX mm) H x 1.25" (32 mm) D
Operating Temp.:	-40° to +65° C / -104° to +149° F



## COLORS

Solid (x) = **A B G R W**

Dual/Split

(x) = **A B D E F**  
**G H J K L**  
**M N P R W**



## Single SM

Black Housing: #EPRDSSMDB(x)  
 White Housing: #EPRDSSMDB(x)W  
 Chrome Housing: #EPRDSSMDB(x)C



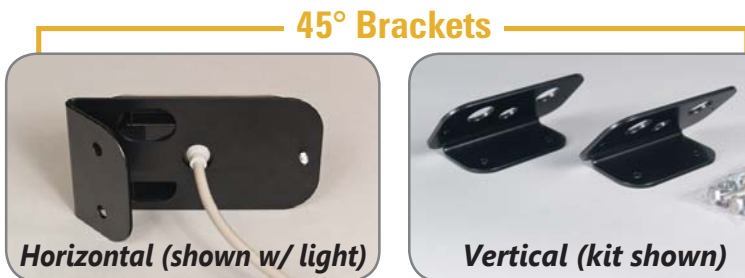
## Dual Stacked SM

Black Housing: #EPRDSSMDB(x)  
 White Housing: #EPRDSSMDB(x)W  
 Chrome Housing: #EPRDSSMDB(x)C



## Dual Side-by-Side SM

Black Housing: #EPRDSSDB(x)  
 White Housing: #EPRDSSDB(x)W  
 Chrome Housing: #EPRDSSDB(x)C



Vertical #PPRSM45BRKT (pair)  
 Horizontal #PPRSM45HBRKT (pair)



#PPRSM90BRKT (pair)

Dash/Deck/Grilles also available, see pages 45 - 46  
 Windshield Lights also available, see pages 49 - 50

# GHOST™

Warning Lights by SoundOff Signal

- The original GHOST light now in a sleek, narrow surface mount light - now available in a Dual Stacked light
- Die cast aluminum housing in your choice of Black, White or Chrome
- Available in 15 solid or split colors
- Premium optics offer the most power & brightness increasing safety for emergency workers & civilians alike
- 6 powerful Gen3 LEDs offer maximum brightness, color consistency & reliability
- Red Stop/Tail model is a low power, Steady-on Red Running Light. Once brake is applied light flashes 5 times & remains on at full power while brake is activated
- Moisture & vibration resistant for heavy duty & exterior applications
- Light Sync Technology to synchronize your lights to alternate the flash patterns or flash simultaneously
- Includes Santoprene Rubber Mounting Gasket & Mounting Hardware with 18" of 3-wire Shielded Cable

## GHOST™ Single Surface Mount (SSM)

- Single light in Black, Chrome or White housing colors

## GHOST™ Dual Surface Mount (DSM)

- NEW! Coming Soon
- Dual Stacked light in Black, Chrome or White housing colors

Tech Specs	GHOST™
Flash Patterns:	33 Flash Patterns
Light Sync:	Yes
Technology:	6 Gen3 LEDs
Mounting:	Surface Mount on 4.9" (124 mm) centers
Input Voltage:	10 - 30 Vdc
Current Draw:	0.75 amps (flash pattern dependent)
Dimensions:	Width x Height x Depth 5.7" (14 cm) L x 1.06" (28 mm) H x 1.8" (46 mm) D
Operating Temp.:	-40° to +65° C / -104° to +149° F



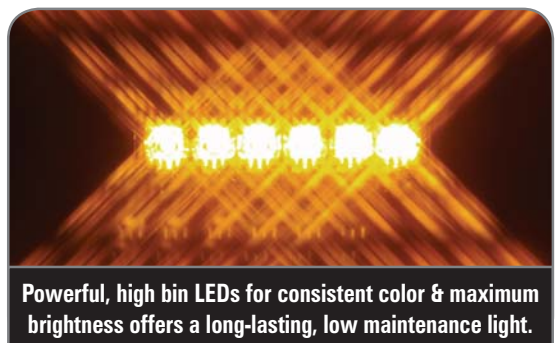
Excellent Stop/Tail rear lighting option for larger vehicles with power & brightness for a maximum signal.



Perfect mid-level lighting for increased visibility & heightened safety (Skyfire™ LED Lightbar also shown).



Close up photo of a Black housing GHOST™ light shown mounted on the side of a wrecker/tow truck.



Powerful, high bin LEDs for consistent color & maximum brightness offers a long-lasting, low maintenance light.

## COLORS

Solid

(x) = **A B G R W**

## Dual/Split

(x) = **A B D E F**  
**G H J K L**  
**M N P R W**



Chrome Housing



Black Housing



White Housing



### GHOST™ Single SM

Black Housing: #EGHST2(x)  
 Chrome Housing: #EGHST2(x)C  
 White Housing: #EGHST2(x)W

### GHOST™ Single SM - Stop/Tail

Black Housing: #EGHSTT2RB\*  
 Chrome Housing: #EGHSTT2RC\*  
 White Housing: #EGHSTT2RW\*  
 \*Stop/Tail light available in R color only.



### GHOST™ Dual Stacked SM

Black: #EGHST6(x)B  
 Chrome: #EGHST6(x)C  
 White: #EGHST6(x)W



Recess Mount



Single or Dual  
 Multi-mount

See  
 pgs. 53-54



Heavy Duty Rock Bracket

GHOST™ Spot Lights also available, see pages 69 - 70

1.800.338.7337 / www.soundoffsignal.com

Surface Mounts - GHOST™ Single or NEW! Dual



# RAPTOR™

**EXPLOSIVE POWER. EXTREME ANGLE.**



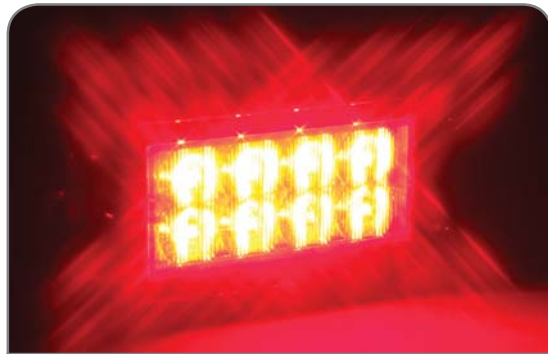
## Black Housing/Clear Lens #ERPT1SSMDB(x)

- **Specifically designed to resist corrosion** due to water & harsh cleansing agents used to clean vehicles
- **Durable Xylex molded lens & housing** resists rust, corrosion & protects against harsh detergents
- **Features an O-ring design** that reduces stress to the screw bosses for a more durable, long-lasting light
- **Extreme Angle optics for a bright, wide signal**
- **Light Sync Technology to synchronize your lights**
- **Features treated & potted internal heat sink** to protect the driver board & wires from moisture penetration
- **Includes** Santoprene Rubber Mounting Gasket, 18" of 3-wire shielded Cable & Mounting Hardware for installation



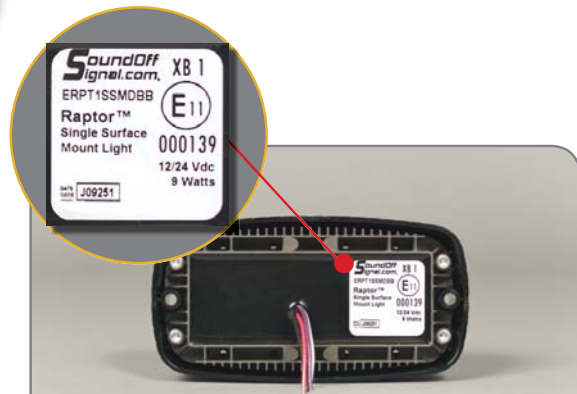
Xylex molded housing & lens

Raptor™ offers Extreme Angle optics with a durable & corrosion resistant Xylex lens & housing.



Red LED Raptor™ Single Surface Mount (SM) light.

Tech Specs	Raptor™
Flash Patterns:	6 Flash Patterns (3 simultaneous, 3 alternating)
Light Sync:	Yes
Technology:	8 Gen3 LEDs
Mounting:	Surface Mount on 4.2" (105 mm) centers
Input Voltage:	10 - 30 Vdc
Current Draw:	less than 2 amps
Dimensions:	Width x Height x Depth 5" (126 mm) W x 2.8" (70 mm) H x 1.4" (35 mm) D
Operating Temp.:	-40° to +65° C / -104° to +149° F



Labeling on Blue LED light clearly shows "e" mark designated for ECE65 compliant lights for international use.



**COLORS**  
Solid  
(x) = **A B R W**

# LED3 MINI LIGHT



Dual LED3 Mini Lights mounted with Vertical License Plate Bracket shown on a Ford F-250 truck.

- **High powered, versatile mini surface mount**
- **Compact size - our smallest light**
- **Many versatile mounting options** with optional brackets & bezels for any vehicle & any mount
- **High quality, high bin LEDs** for consistent color
- **Light Sync Technology to synchronize your lights** to alternate the flash patterns or flash simultaneously
- **Black powder coated aluminum housing**
- **Durable Lexan polycarbonate lens**
- **Weatherproof design** with superior reliability & performance regardless of weather conditions
- **Includes** Rubber Mounting Gasket & Mounting Hardware with 18" of 3-Wire Shielded Cable for hard wire installation

Tech Specs	LED3™ Mini Light
Flash Patterns:	33 Flash Patterns
Light Sync:	Yes
Technology:	3 Gen3 LEDs
Mounting:	Surface Mount on 2.21" (56 mm) centers
Input Voltage:	10 - 16 Vdc or 10 - 30 Vdc
Current Draw:	0.5 amps
Dimensions:	Width x Height x Depth 2.5" (64 mm) W x 1.4" (36 mm) H x 1.25" (32 mm) D
Operating Temp.:	-40° to +65° C / -104° to +149° F



(Blue & Red = 1 light  
Amber = 2 lights)

10-16 Vdc #EL3SN(x)  
10-30 Vdc #EL3SN3Ø(x)



Universal Grille Bracket  
#EL3SNBRK1GRU



45° Bracket  
Vertical #EL3SNBRK145  
Horizontal #EL3SNHBRK145



90° Bracket  
#EL3SNBRK190



Side-by-Side 90° Bracket  
#EL3SNBRK290H



Stacked 90° Bracket  
#EL3SNBRK290V (horiz. mount)



Stacked 90° Bracket  
#EL3SNBRK290V (vertical mount)



Universal Lic. Plate Bracket:  
Horizontal (shown) #EL3SNBRK2LPH  
Vertical #EL3SNBRK2LPV



Single Bezel #PEL3BZSG(x)

Bezels available in:  
Black=B, Chrome=C, White=W



Dual Stacked Bezel #PEL3BDS(x)



Dual Side-by-Side Bezel #PEL3BZSS(x)

COLORS  
Solid

(x) = **A B G R W**

LED3™ Spot Light also available, see page 72

Surface Mounts - Raptor™ Single & LED3™ Mini Light

1.800.338.7337 / www.soundoffsignal.com

# intersector™

by SoundOff Signal

- **Patented design, the first light of it's kind to offer critical intersection warning AND side warning**
- **Design of light is based upon problem solving research** - 50% of all emergency vehicle crashes are likely to occur at dangerous intersections
- **No other light offers 180 degree output** - specially designed reflector amplifies & throws the light at the perfect angle to increase visibility at intersections & offer side warning
- **Variety of Adaptors for versatile mounting under many types of vehicle mirrors**
- **Coming Soon! Custom order with your vehicle adaptors** - see web for order form (standard single light kit still available, part number shown on opposite page)
- **Unique under mirror mount simplifies installation** - labor saving light is much easier to install than traditional front mirror skull mounts - no mirrors to work behind or around
- **Light can be surface mounted to any flat area** on any type of vehicle - elevate your safety & visibility by mounting to the heachache rack or body of the vehicle wherever additional lighting is needed
- **Features Cruise Mode for steady burn if desired**



Unique mount & special design angles & amplifies the output for heightened visibility wherever you need it.



Powerful output with specially designed optics. White LED Intersector™ shown.



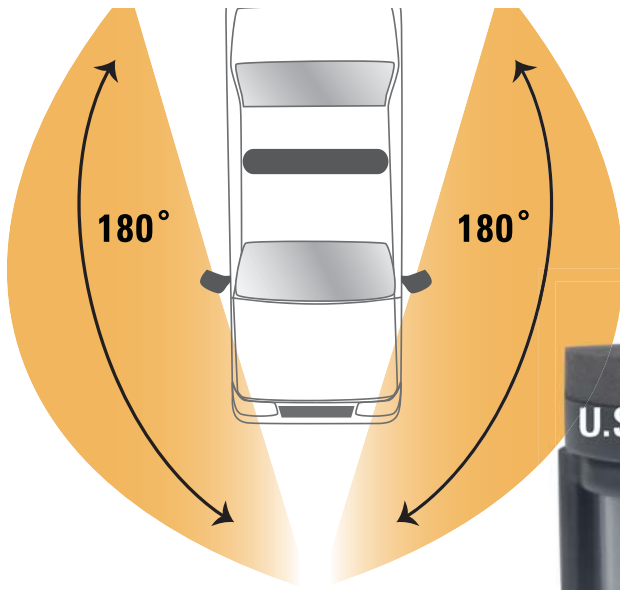
Intersector™ surface mounted on a headache rack for enhanced rear visibility & increased safety.



Adaptors & Wedges allow for Under Mirror Mounts on all types of vehicle mirrors. Shown on a Ford Explorer.

Tech Specs	Intersector™
Flash Patterns:	30 Flash Patterns
Light Sync:	Yes
Technology:	9 Gen3 LEDs
Mounting:	Under Mirror & Surface Mounts
Input Voltage:	10 - 16 Vdc
Current Draw:	less than 1.5 amps
Dimensions:	Width x Height x Depth 2.9" (74 mm) W x 1.9" (48 mm) H x 2.9" (74 mm) D
Operating Temp.:	-40° to +65° C / -104° to +149° F





# intersector™

by SoundOff Signal

## Single Light Kit, Standard Configuration\*

#ENT2B3(x)

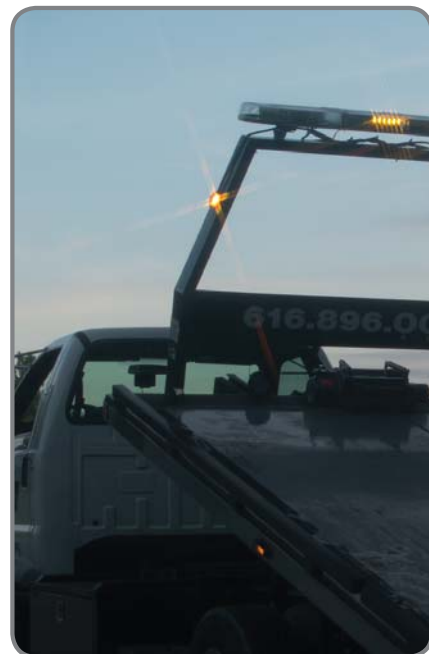
\*Includes 1-light w/ in-line flasher, foam gasket, 2-curved surface adaptors, 3-wedges & screws for installation.



**NEW!** \*May be ordered with your vehicle adaptors - see web for order form

### Parts & Accessories

- Intersector™ light (each): #PENT2BØ(x)
- In-line Flasher (each): #PNT2FLA
- Univ. Curved Surface Adaptors (pair): #PNT1CRVØ1
- Wedges (set - 0°, 5° & 10°): #PNT1WDG



COLORS  
Solid

(x) = **A** **B** **G** **R** **W**

Surface Mounts - Intersector™ Under Mirror

1.800.338.7337 / [www.soundoffsignal.com](http://www.soundoffsignal.com)





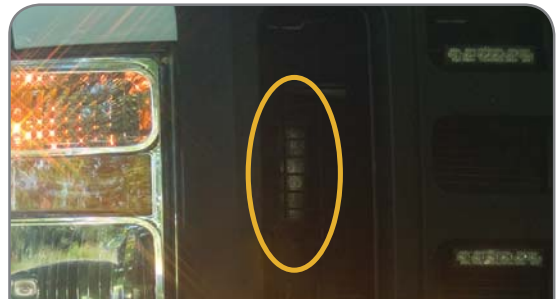
Bracket shown at lowest height

10-16 Vdc #EL6GD(x)  
10-30 Vdc #EL6GD30(x)

- **Brilliant Gen3 LEDs packed into a small & aerodynamic shape** with adjustable bracket that can tilt the light head down 10 degrees or up 20 degrees to angle the output where you need it
- **Value priced light stretches your budget dollars**
- **Compact design** can be mounted just about anywhere
- **Weatherproof design**
- **Adjustable stainless steel bracket** allows a maximum height of 3.4" or a minimum height of 3"
- **30° of Light head adjustment to tilt up or down** to angle the light for maximum visibility
- **Light Sync Technology to synchronize your lights**
- **Black polycarbonate base**
- **UV Resistant polycarbonate lens**
- **Super efficient heat sink**
- **Flash Pattern Recall** remembers last pattern used



XP 63 mounted interior from window of a Ford F-250 truck provide excellent front visibility.



XP 63 light mounted in the grille of a Ford F-250 truck (see below). GHOST™ lights also shown in the grille.



XP 63 light mounted in the grille of a Ford F-250 work truck (grille removed to show mount).

Tech Specs	XP 63™
Flash Patterns:	16 Flash Patterns
Light Sync:	Yes
Technology:	6 Gen3 LEDs
Mounting:	Surface Mount
Input Voltage:	10 - 16 or 10 - 30 Vdc
Current Draw:	less than 1 amp @ 12.8 Vdc (flash pattern dependent)
Dimensions:	Width x Depth: 5" (13 cm) W x 2.6" (66 mm) D Height: 3.1 " (79 mm) Min. / 3.4" (86 mm) Max.
Operating Temp.:	-40° to +65° C / -104° to +149° F

COLORS  
Solid

(x) = **A B G R W**

Dual/Split

(x) = **A B D E F**  
**G H J K L**  
**M N P R W**

